

MONTHLY MEMBERSHIP PROGRESS REPORT

LOCATION INDIA

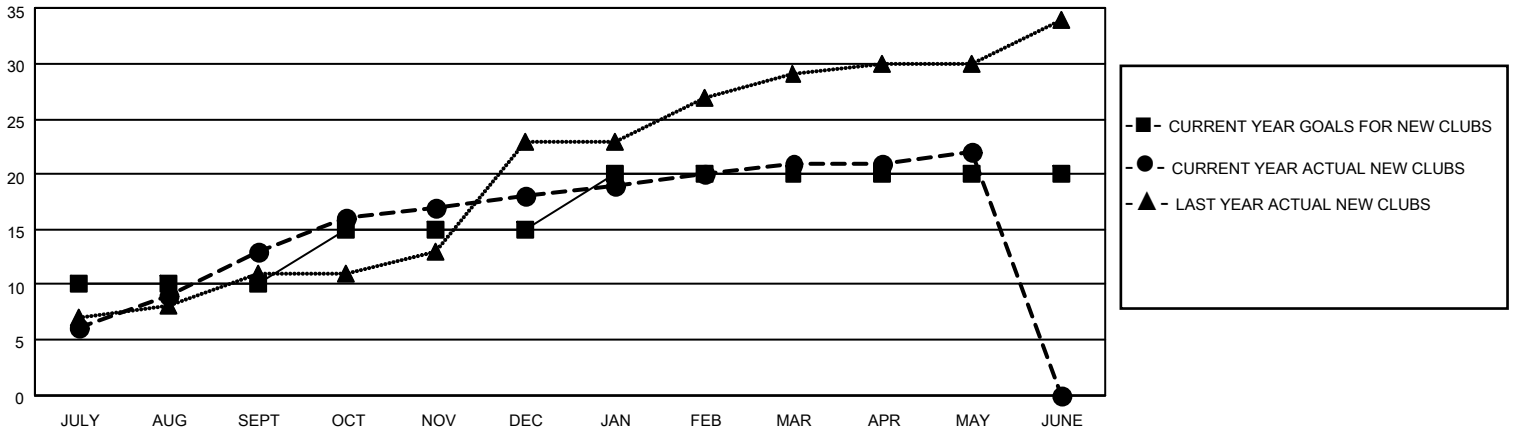
District 317 A

Results as of: 5/31/2022

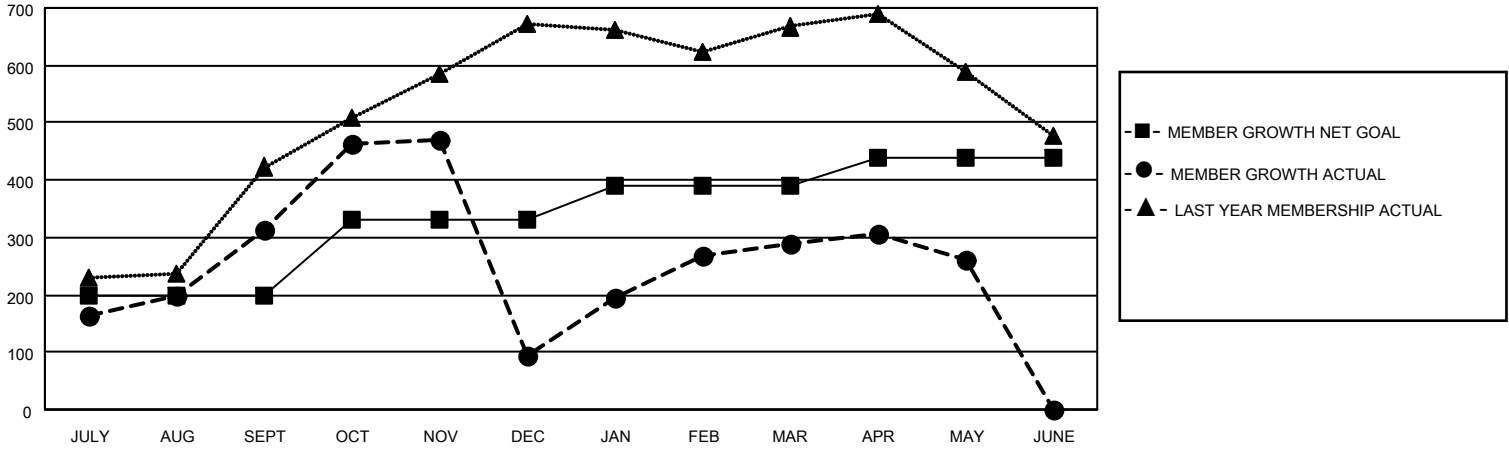
Clubs			
RESULTS FOR 2021-2022			
QUARTER	NEW CLUB GOAL	NEW CLUBS	DROPPED CLUBS
JULY/AUG/SEPT	10	13	5
OCT/NOV/DEC	5	5	8
JAN/FEB/MAR	5	3	1
APR/MAY/JUNE	0	1	0

Members			
RESULTS FOR 2021-2022			
QUARTER	MEMBER GROWTH NET GOAL	MEMBER GROWTH ACTUAL	DROPPED MEMBERS ACTUAL (including transfers)
JULY/AUG/SEPT	200	521	194
OCT/NOV/DEC	130	287	487
JAN/FEB/MAR	60	275	51
APR/MAY/JUNE	50	74	100

GOALS AND ACTUAL NEW CLUBS CUMULATIVE



GOALS AND ACTUAL MEMBERS CUMULATIVE



DROPPED CLUBS: 14

112 CLUBS OF 210 ADDED 1 OR MORE NEW MEMBERS

GENDER DISTRIBUTION

MALE	3,858 (65.45%)
FEMALE	2,037 (34.55%)
NON BINARY	0 (0.00%)
PREFER NOT TO ANSWER	0 (0.00%)

DROPPED MEMBERS

[CLICK HERE FOR CUMULATIVE MEMBERSHIP DATA](#)

DECEASED	21
CLUB CANCELLED	330
OTHER	482
TOTAL	833

TOTAL FAMILY UNIT MEMBERS 2,942

FAMILY MEMBERS PAYING HALF DUES 1,675